

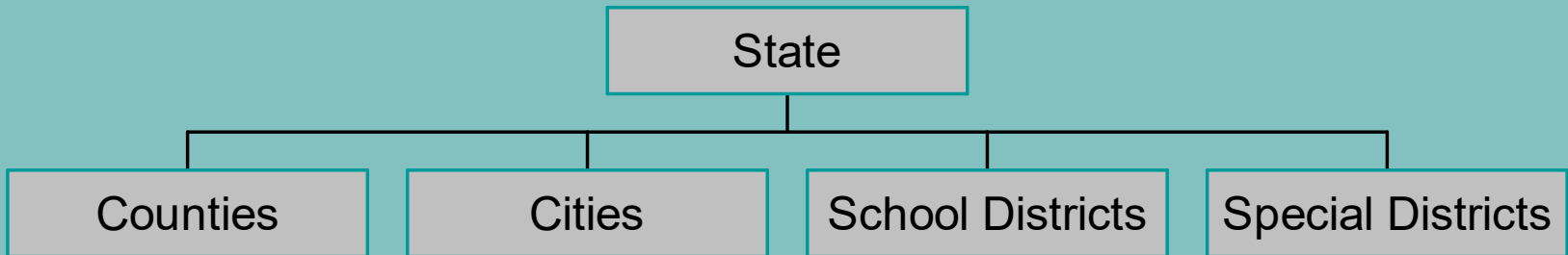


# Forms of Local Government in Florida



# Florida Structure

## Florida Structure



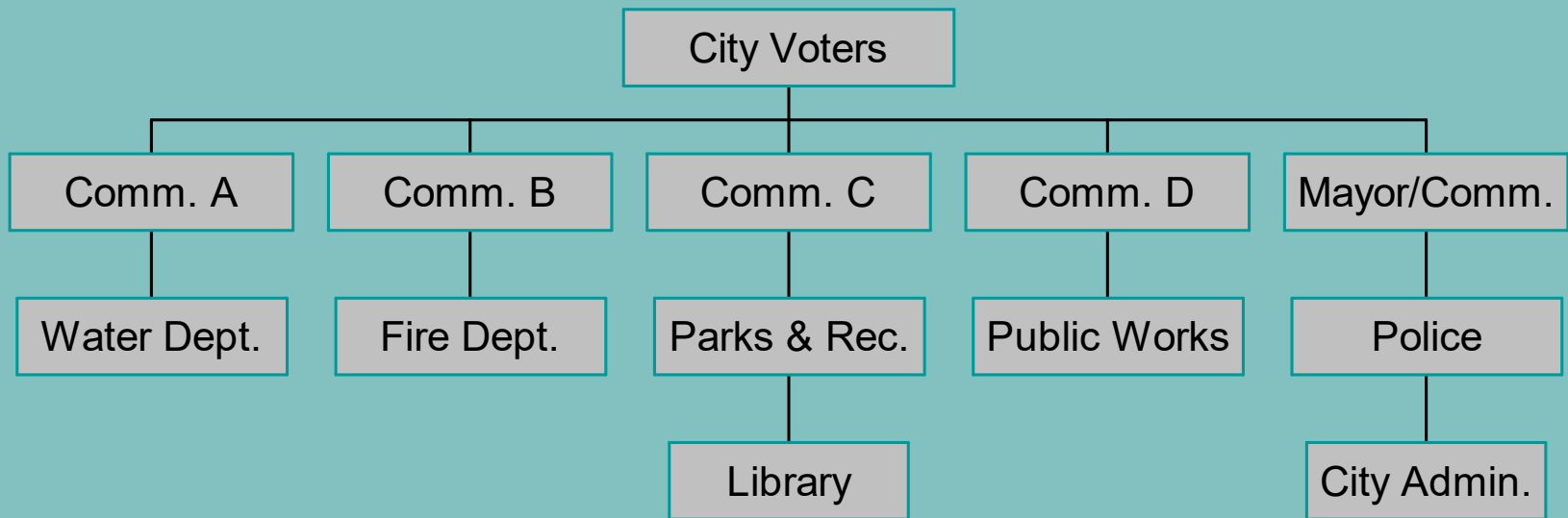
# Florida's Cities

- 411 cities, towns and villages
- Charter States the Form of Government
- Charter Identifies Charter Officers  
(Attorney, Clerk, Auditor, Manager if applicable)
- Many Cities Created Using “Model City Charter” Outline, Features

# More on Florida's Cities

- Florida City Elected Officials are Called Councils, Commissions or Councillors.
- Positions are Non-Partisan, part-time in most cases.
- Council sizes vary from 3 to 19; five and seven are most common.

# Commission Form



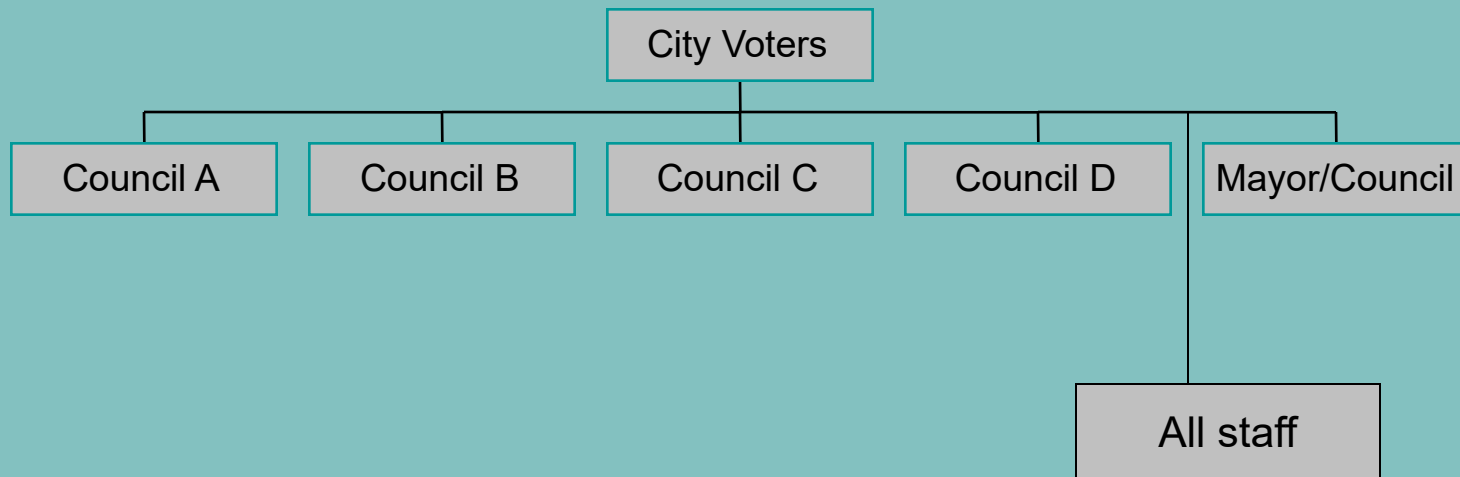
# Commission Characteristics

- Historically Used in Counties
- Cities Adopted it in 1920s-1950s
- Less Popular Due to Complexity of Government and Services; part-time role
- Commission Appoints Clerk & Attorney
- Less than 3 cities in FL have this today

# ■ Mayor-Council Forms

- Two within this type: level of power for the mayor is the determining issue
- ‘weak’ or ‘strong’ – not about the mayor personally or professionally, but about the charter language and powers contained under the type

# Council-Weak Mayor

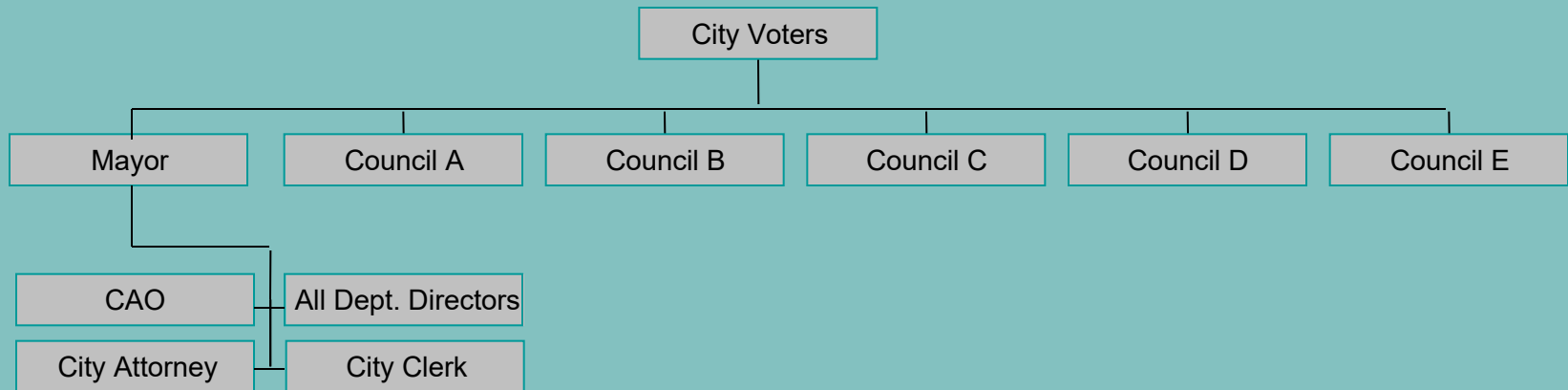




# Council-Weak Mayor Traits

- Council and Mayor have equal powers
- Mayor is ceremonial figure; proclamations
- Council administers city collectively; hires Clerk and Attorney, other staff
- City Clerk's role is often greater in this form
- Approximately 80 FL cities have this form
- Mayor does not always have voting power

# Council-Strong Mayor



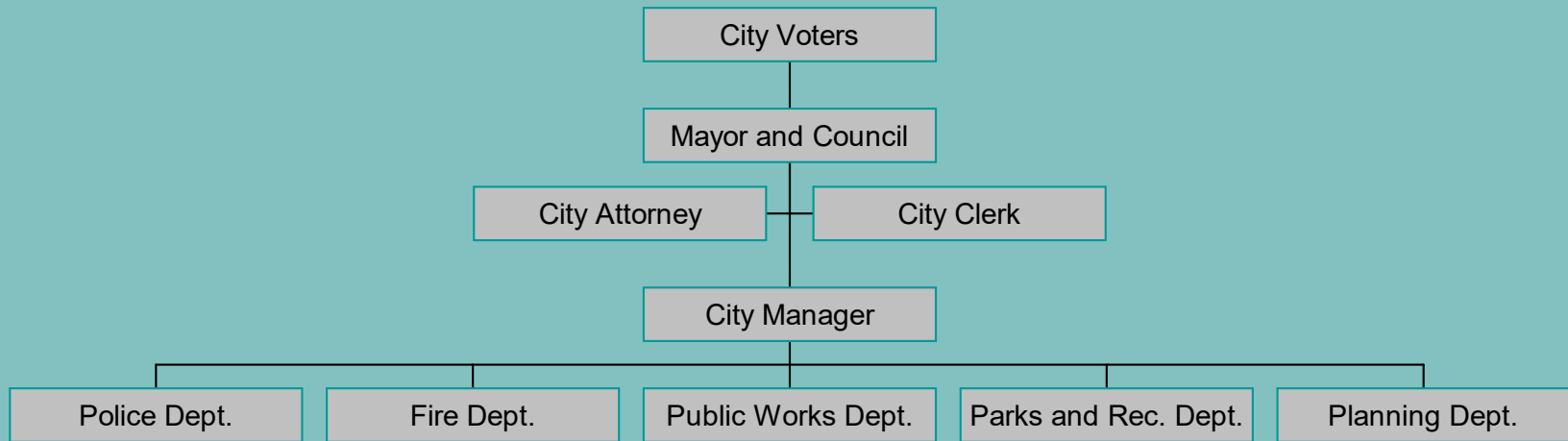
# Council-Strong Mayor

- Many Variations on this Form
- Mayor is Administrator – paid; full-time
- Mayor May Also be Legislator, less common
- Mayor *May* Have Administrator; not all do
- Council is Legislative Only
- About 45 cities in FL have this Form

# More On Council-Strong Mayor

- Many Variations on Mayor's Powers: veto, appointments, agenda, etc.
- In Some Cities, Mayor Votes with Council; in others, Mayor is Administrator Only.
- Varies as to Attorney and Clerk Appointments; Mayor often hires all staff.

# Council-Manager



# Council-Manager

- Mayor and Council (or Commission) Appoint Manager Collectively
- Manager serves at Council's Pleasure
- Manager Hires/Fires all Staff
- Manager Prepares and Presents Budget
- Mayor and Council are Legislative Only
- About 280 FL Cities have this form

# More on Council-Manager

- Mayor May be elected by council; by rotation; or by voters (at-large)
- Mayor holds ceremonial position (proclamations)
- If Mayor is legislative, a few have veto
- Council May Appoint Clerk, Attorney
- Many FL Cities Seek ICMA recognition of form – Criteria Must be Met in Charter

# More on Managers

- Managers are expected to offer council recommendations on policy and on legislative matters, often in agenda materials
- Managers conduct research and bring back recommendations through their internal departments and external experts



# Hybrids

- Each Charter is Unique
- Some Charters are Combinations of CWM-Commission
- Some Charters are Combinations of CWM and C-M
- No Academic Study Has Ever Categorized All FL Cities

# Forms of County Government

- 67 Counties; Board of County Commissioners is the Governing Body.
- Counties can Select form of Government Through Ordinance, or by Charter.
- Small and Rural Counties Have Less Administrative Functions
- Urban Counties Often Have Manager/Administrator.

# Three Basic County Forms in FL

- Clerk of Court as Administrator
- Commission-Manager
- Elected Executive

# Clerk-Administrator

- Either the Clerk is the Administrator, or the Administrator is Housed in the Clerk's Organization.
- BOCC makes most decisions – Administrator implements.

# More on Counties

- BOCC and Constitutional Officers are partisan unless county charter states otherwise
- Full-time unless charter states otherwise
- 19 of 67 counties have charters; provides voters with stronger county structure/powers

# City and County Managers

- Most have degrees in public administration
- Professional association is ICMA
- Credentialing is encouraged, not mandatory
- Statewide association is FCCMA
- Members abide by Code of Ethics – strongest among gov't professional associations

# More on Managers

- Tenure in FL for a city or county manager averages 7 years; national is 7.5 years
- Terms of office in FL are mix of 2, 3 and 4-year terms – more turnover than other states with elected officials
- Managers go into the profession knowing turnover happens

# Elements of C-M Form

- Charter or organizing document states manager will prepare budget; hire/fire staff; implement legislation; negotiate for city; be a professional, non-partisan administrator
- Variations exist – but those elements are the most important for a city or county to be considered this form



# C-M Form In the World

- In the U.S. – the C-M form is the most prevalent in cities and counties, also in FL
- Great Britain, Australia also common
- Other nations exploring it: ICMA helps developing/decentralizing countries to organize their governments